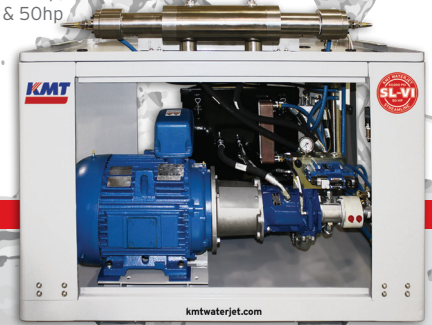


# KMT Waterjet Cutting Pumps

## STREAMLINE® SL-VI 60,000psi/30hp, 40hp & 50hp

SL-VI s-Series  
(Basic Model)  
Available in 30hp,  
40hp & 50hp



### THE RIGHT SOLUTION FOR EVERY APPLICATION

The KMT STREAMLINE® SL-VI Series utilizes the latest technology and an innovative configurable design for ease of use, reliability and convenience---the result is a system that delivers the highest efficiency and profit.



SL-VI e-Series (Economical Model) Same as s-Series, but includes HMI Control Available in 30hp, 40hp & 50hp

SL-VI i-Series (Fully Loaded Model) Available in 30hp, 40hp & 50hp



#### Key Pump Features and Options Include:

**Proven Technology** STREAMLINE® SL-VI uses intensifier technology that has millions of operational usage hours

**Modular Design** Variety of choices to meet OEM and customer requirements

**High Pressure Intensifiers** 60,000psi redundant topworks\*

**Horsepower Selection** 30hp, 40hp & 50hp

**Top Cover Guard Interlock Design\*** Meets EN ISO13849-1 Safety Performance Standard PLa rating

**Power Factor Correction\*** Reduce electrical demand and operating costs

**IE3 and NEMA Premium Motor Design** Optimized motor efficiency, reduced electrical consumption

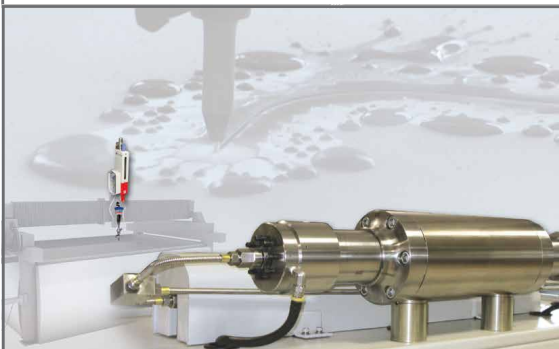
**Siemens PLC Based Electrical Panel** Universal design for global network support

**Redesigned Electrical Panel** Separation of High Voltage & Low Voltage sections meet IEC/EN 60204-1 Standards



**INCREASED  
ORIFICE SIZES  
= INCREASED  
PRODUCTIVITY  
at 60,000psi**

	SL-V	SL-VI
ORIFICE SIZE @ 30HP	.010	.011
ORIFICE SIZE @ 40HP	.012	.013
ORIFICE SIZE @ 50HP	.013	.014



# SPECIFICATIONS

DESCRIPTION	UNIT	30	40	50
Motor Rating	kW/HP	22 / 30	29 / 40	37 / 50
Pressure Range	PSI	60,000	60,000	60,000
Max. Flow Rate at Max. Pressure (60 Hz)	gal/min	0.69	0.84	1.00
Length	in	67.7	67.7	67.7
Width	in	45.6	45.6	45.6
Height	in	59.3	59.3	59.3
<b>Cutting Water Circuit</b>				
Intensification Ratio		20.21	20.21	20.21
Max. Stroke Rate	SPM	*38	*49	*59
Attenuator Volume	Liter	1	1	1
Cutting Water Inlet Pressure	PSI	35-100	35-100	35-100
Min. Cutting Water Inlet Flow	gal/min	2.8	3.5	4
Low Pressure Filter	µm abs.	10	10	10
<b>Controls &amp; Electric</b>				
Nom. Current at 480V/60Hz	A	40	52	65
<b>Pneumatic, Hydraulics &amp; Cooling Circuit*</b>				
Hydraulic Tank Capacity	gal	40	40	40
Oil Level and Temperature Control		Sensor	Sensor	Sensor
<b>Standard Features</b>				
Adjustable Booster Pump		•	•	•
Cutting Water Inlet Shut-Off Valve		•	•	•
Dual Pressure Setting		•	•	•
Oil Drip Pan		•	•	•
Dump Valve		•	•	•
Water Cooled Heat Exchanger				
<b>Options</b>				
Additional Liter of Attenuation		o	o	o
Air Cooled Heat Exchanger		o	o	o
Cover		o	o	o
Doors		o	o	o
Electric Panel & Cabinet		o	o	o
High Pressure Transducer		o	o	o
Motor Rewind for 575v & CSA		o	o	o
Power Factor Correction		o	o	o
Proportional Control		o	o	o
Redundant Intensifier		o	o	o
Soft Start/Electronic/Y-Delta		o	o	o
USDA		o	o	o

**NOTE: Applies to all pumps:**

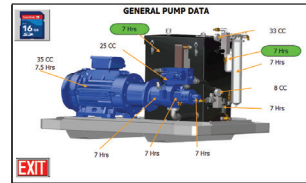
Hydraulic Tank Capacity 40 gal  
 Min. pneumatic air pressure 86 PSI  
 Max. pneumatic air flow rate 1 SCFM  
 Ambient temp. @ Oil-to-Water cooling circuit 41 - 106 °F  
 Ambient temp. @ Oil-to-Air cooling circuit 41 - 86 °F

- Standard
- o Option
- \* Estimated

## NEW! Siemens PLC Based Electrical Panel



The Home Screen displays the operating status of the machine and provides access to a series of setup and monitoring screens.



**Harmonized PLC Platform** NEW Touch screen is software updateable, offers 11 languages, optional gauges, and includes monitoring hours and cycle times for preventive maintenance. Standard systems offer Ethernet and USB Port with import/export capabilities.



**KMT Waterjet now offers a Cut Calculator APP that compares 90,000psi to 60,000psi cutting. Increase Productivity @ 90,000psi!**



**KMT Waterjet Systems Inc.**

635 West 12th Street  
 Baxter Springs, KS 66713 USA  
 620-856-2151 • 800-826-9274  
 Fax: 620-856-5050  
 sales@kmtwaterjet.com

THE HEART OF WATERJET CUTTING

kmtwaterjet.com



7/1/2019 - R5  
 Clarified e-Series/s-  
 Series photo/  
 description